



K4173 Misses' Dresses

XS-S-M-L-XL

Dresses, close-fitting through bust, have front and back diagonal seams and uneven narrow hems. **A:** Sleeveless. **B:** Contrast on left side of front and back, capped sleeve.

FABRICS: Designed for knits only with 35% stretch across the grain.

Suggested Fabrics: Jersey, interlock, matte jersey, cotton jersey.

STANDARD BODY MEASUREMENTS:

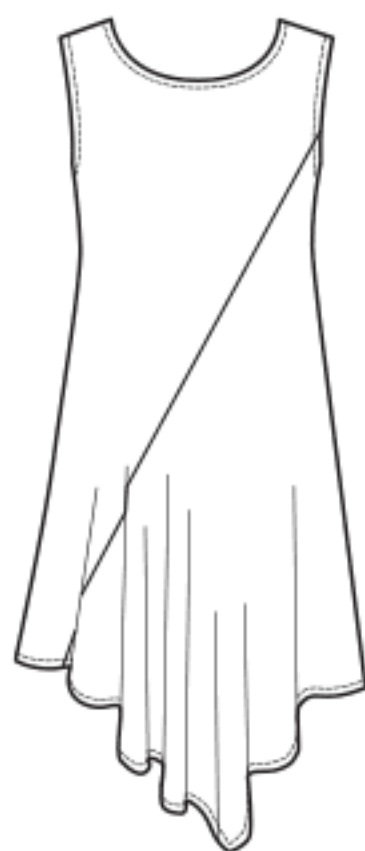
SIZES:	XS	S	M	L	XL	
Bust	31 ¹ / ₂ -32 ¹ / ₂	34-35 ¹ / ₂	37-38 ¹ / ₂	40-41 ¹ / ₂	43-45	"
	80-83	86-90	94-98	102-106	110-114	cm
Waist	22 ¹ / ₂ -23 ¹ / ₂	24 ³ / ₄ -26	27 ¹ / ₂ -29	31-33	35-37	"
	57-60	63-66	70-74	79-84	89-94	cm
Hip	32 ¹ / ₄ -34	35 ¹ / ₂ -37	38 ¹ / ₂ -40	41 ¹ / ₂ -43 ¹ / ₂	45-47	"
	82-86	90-94	98-102	106-110	115-120	cm
Back Waist Length	15 ¹ / ₂	16	16 ¹ / ₂	17	17	"
	39	41	42	43	43	cm

FINISHED GARMENT MEASUREMENTS:

SIZES:	XS	S	M	L	XL	
Finished Length at Center Back From Waist						
Dress A, B	18 ¹ / ₂ (47.3)	19 (49)	19 ¹ / ₂ (50.3)	20 (51)	20 ¹ / ₂ (52.3)	" (cm)

MATERIAL REQUIRED: Fabric requirement allows for nap, one-way design or shading. Extra fabric may be needed to match design or for shrinkage.

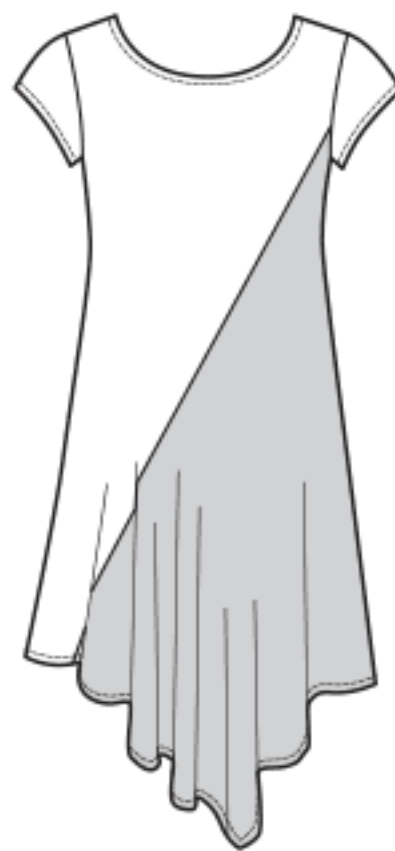
SIZES:	XS	S	M	L	XL	
FABRIC 60" (152 cm) WIDE						
Dress A	2 ¹ / ₈ (2.0)	2 ¹ / ₈ (2.0)	2 ¹ / ₈ (2.0)	2 ¹ / ₈ (2.0)	2 ¹ / ₄ (2.1)	yd (m)
Dress B	1 ¹ / ₄ (1.2)	1 ¹ / ₄ (1.2)	1 ¹ / ₄ (1.2)	1 ¹ / ₄ (1.2)	1 ¹ / ₄ (1.2)	yd (m)
Contrast B	1 ¹ / ₈ (1.1)	1 ¹ / ₈ (1.1)	1 ¹ / ₈ (1.1)	1 ¹ / ₈ (1.1)	1 ¹ / ₈ (1.1)	yd (m)



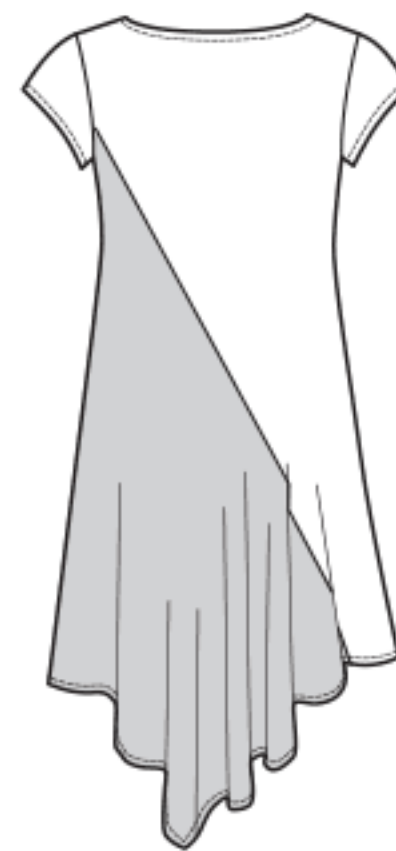
Front A



Back A



Front B



Back B

4" (10 cm) of Knit Fabric should stretch to at least here.

USE FABRIC WITH 35% STRETCH ACROSS THE GRAIN