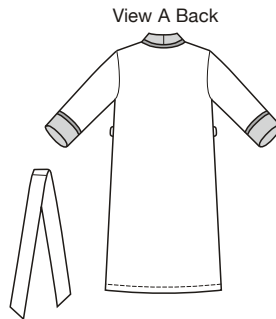




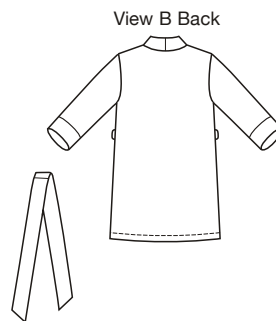
A



View A Back



B



View B Back



price



3644

MISSES' ROBES
XS-S-M-L-XL

Designed for lightweight woven fabrics.

Suggested Fabrics: Cotton, cotton types, lawn, batiste, broadcloth, challis, silk, silk types, charmeuse.

Wrap robes have shawl collar, patch pockets with bands, full length sleeves with sleeve bands, and tie belt. View A upper collar, pocket bands, and sleeve bands are from contrast fabric and have piping trim.

Size	XS	S	M	L	XL	
Finished Length from Waist	View A 34" (86 cm) — All Sizes	View B 24" (62 cm) — All Sizes				
Material Required: Fabric requirement allows for nap, one-way design or shading. Extra fabric may be needed to match design or for shrinkage.						
Fabric 60" (152 cm) Wide						
View A	2 5/8 (2.40)	2 3/4 (2.55)	2 3/4 (2.55)	2 7/8 (2.65)	2 7/8 (2.65)	yd (m)
View A Contrast	1 3/4 (1.60)	1 3/4 (1.60)	1 3/4 (1.60)	1 3/4 (1.60)	1 3/4 (1.60)	yd (m)
View B	2 1/2 (2.30)	2 5/8 (2.40)	2 3/4 (2.55)	2 3/4 (2.55)	2 3/4 (2.55)	yd (m)
Fabric 45" (115 cm) Wide						
View A	3 3/4 (3.45)	3 3/4 (3.45)	3 3/4 (3.45)	3 7/8 (3.55)	3 7/8 (3.55)	yd (m)
View A Contrast	1 3/4 (1.60)	1 3/4 (1.60)	1 3/4 (1.60)	1 3/4 (1.60)	1 3/4 (1.60)	yd (m)
View B	3 5/8 (3.35)	3 5/8 (3.35)	3 7/8 (3.55)	3 7/8 (3.55)	4 (3.70)	yd (m)
Fusible Interfacing 24" (60 cm) Wide						
View A	1 5/8 (1.50)	1 3/4 (1.60)	1 3/4 (1.60)	1 3/4 (1.60)	1 3/4 (1.60)	yd (m)
View B	1 3/8 (1.30)	1 3/8 (1.30)	1 1/2 (1.40)	1 1/2 (1.40)	1 1/2 (1.40)	yd (m)
Notions: Thread. View A: 3 yd (2.75 m) of piping.						