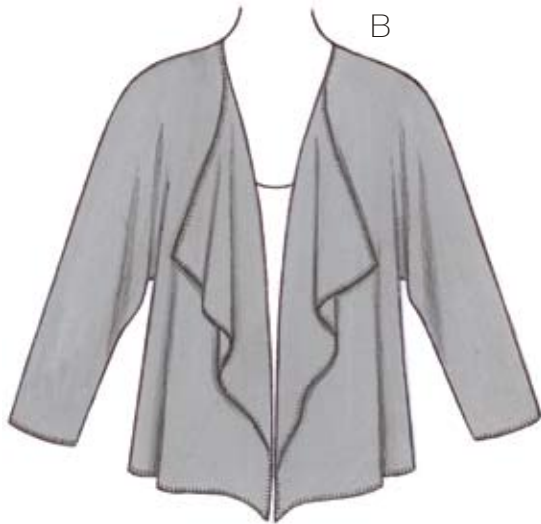




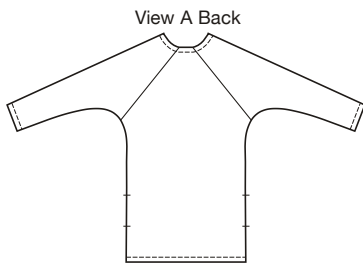
A



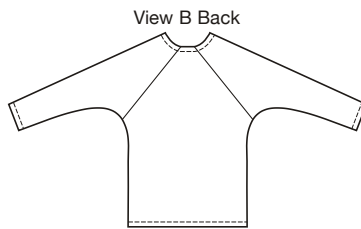
B



KWIK *Serge*
Dual Instructions Included



View A Back



View B Back

price **3753**

WOMEN'S CARDIGANS
1X-2X-3X-4X

Designed for stretch knits only.

Suggested Fabrics: Sweatshirt fleece, French terry, sweater knits, double knit, textured knits.

Note: Wrong side of fabric will show.

Dolman sleeve cardigans have "square" front and sleeve in one, and front edges drape. Outer edges can be left unfinished or finished with serger (overlock) machine, zigzag, straight stitch, or decorative over edge stitch. View A has pockets in side seams.

Size	1X	2X	3X	4X	
Finished Length at Center Back					
View A	35 (89)	35 1/2 (90)	36 (92)	36 1/2 (93)	' (cm)
View B	27 1/2 (70)	28 (71)	28 1/2 (72)	29 (74)	" (cm)
Material Required: Fabric requirement allows for nap, one-way design or shading. Extra fabric may be needed to match design or for shrinkage.					
Fabric 60" (152 cm) Wide					
View A	3 3/8 (3.10)	3 1/2 (3.20)	3 5/8 (3.35)	3 5/8 (3.35)	yd (m)
View B	2 3/4 (2.55)	2 7/8 (2.65)	2 7/8 (2.65)	3 (2.75)	yd (m)

Notions: Thread.

DUAL INSTRUCTIONS INCLUDED: SERGER (OVERLOCK) AND STANDARD SEWING MACHINES.

PLUS SIZE